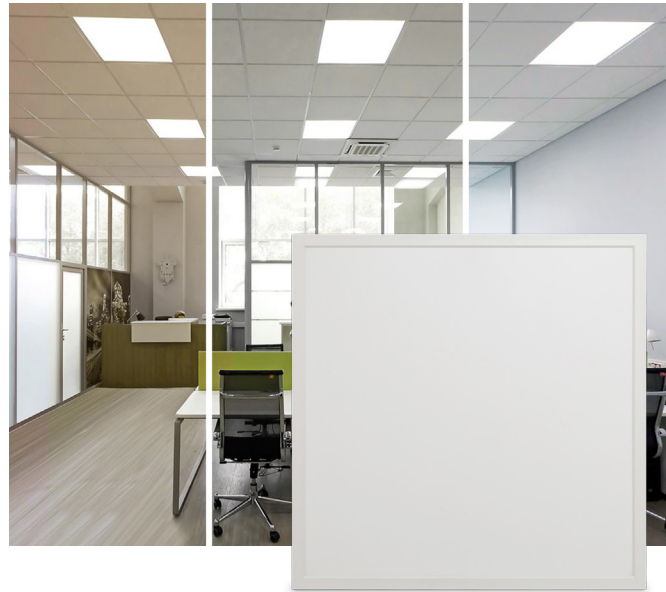


LED BACK-LIT FLAT PANEL

#41220/41221

- ▶ **DESIGN** - LED BACK-LIT FLAT PANEL comes with a durable commercial grade housing resistant to rust and impact, anti-corrosion aluminum seamless rigid frame, anti-glare PC lens, and driver with circuit overload, short circuit, and low-voltage protection, making it both safe and reliable. It is designed to operate on 120-277V circuits.
- ▶ **DIMMING** - Smooth 0-10V dimming capabilities ranging from 10% to 100% with modern LED dimmers allow you to control the look and feel of your space.
- ▶ **COLOR AND POWER SELECTABLE** - You can choose either a 3,000K warm white, 3,500K neutral white, 4,000K cool white or 5,000K daylight color temperature, and change the power with a simple switch.
- ▶ **2.4G WIRELESS CONTROL** - Dimmable and CCT tunable via a wireless handheld or wall-mounted remote, letting you choose either a 3,000K warm white, 3,500K neutral white, 4,000K cool white or 5,000K daylight color temperature.
- ▶ **INSTALLATION** - This fixture has three different mounting options: recessed, suspended, and surface.
- ▶ **APPLICATION** - Perfect commercial or industrial solution for offices, hospitals, schools, retail, workshops, and many other applications. It is also Damp Locations rated.
- ▶ **ADVANTAGES** - With calculated lifespan up to 179,000 hours, these fixtures are made to last decades under normal operation! ASD provides a 5-year limited warranty along with UL and DLC Premium certifications to guarantee top quality products and safety!

Catalog number	
Notes	
Type	

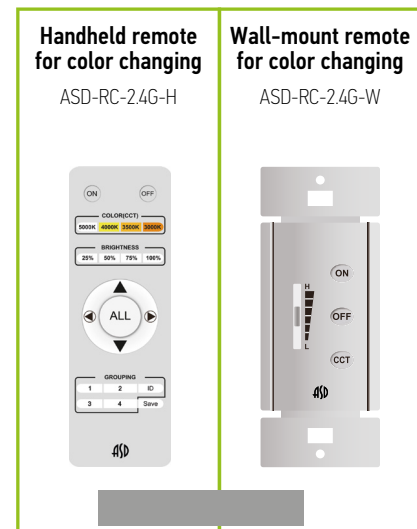


BLP-CC WITH COLOR CHANGING								
#41220	2x2	35W	120-277 V	0-10 V	4,550/4,787/4,925/4,822 lm	3,000-5,000 K	23-3/4" x 23-3/4" x 1-7/16"	Color changing
#41221	2x4	50W	120-277 V	0-10 V	6,500/7,158/7,139/7,093 lm	3,000-5,000 K	47-3/4" x 23-3/4" x 1-7/16"	Color changing
#41299	Handheld remote for color changing						6" x 1-3/4" x 5/8"	-
#41298	Wall-mount remote for color changing						4-1/8" x 1-5/8" x 1-1/2"	-

LED BACK-LIT FLAT PANEL

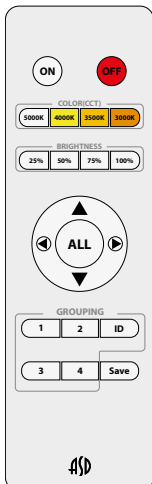
° &#\$\$" ! &#\$\$1

ACCESSORIES (sold separately)



BUILT-IN COLOR CHANGING INFORMATION

HANDHELD REMOTE FOR COLOR CHANGING (sold separately)

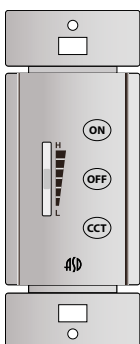


ON OFF	ON Turn ON OFF Turn OFF	Handheld remote controller cannot be used as a switch, it should be used together with the switch.	
ID	Pairing the light	While holding the "ID" button, power on your panels. Your panels should flash twice to indicate they are paired. You can pair several lights at once.	
ID + ▼	Disconnect remote from panels	While holding the down arrow and the ID button, turn on your panels, this will disconnect them from your remote. Panels will flash twice to indicate they are no longer paired.	
1 2 3 4	Group selecting buttons	To assign panels to a group you must first pair them with your remote. Once paired hold the # button you wish to assign to your panels. While the lights are off hold the # button and turn on your switch. Panels will turn on. Do not release the button until the panels flash one time. The flash may not occur until after 3 seconds of turning on the lights. If you release before the flash your groups will not be set up.	
Save	Setting default brightness and CCT	To save the desired settings as a default, turn the panel to desired color temp and brightness. Then hold the Save button on the remote until the panels turn off. This will save the settings for future use.	
ALL	All groups selected		
5000K 5,000 K	4000K 4,000 K	3500K 3,500 K	3000K 3,000 K
25% 25 % brightness	50% 50 % brightness	75% 75 % brightness	100% 100 % brightness
▼ Decrease brightness	▲ Increase brightness	◀ Decrease color temperature	▶ Increase color temperature

- ▶ After turned on, the light will automatically detect the 0-10 V dimmer to set brightness, it will get 100 % brightness if no dimming signal to input the light.
- ▶ If use 0-10 V dimmer to control, light brightness will convert to 0-10 V dimmer's current brightness setting.
- ▶ If using remote controller to control, light brightness will only change from its current brightness rather than remote controller's current brightness setting.

WALL-MOUNT REMOTE FOR COLOR CHANGING

sold separately:



ON OFF	ON Turn on OFF Turn off	The wall-type remote controller cannot be used directly as a switch, it should be used together with the switch.
ON + OFF	Lights code matching combination keys	Press the ON + OFF buttons simultaneously to keep the remote's indicator light always on. Turn on the light for 2 Seconds then release the combination keys to match the code. Matching code with many lights at the same time is available.
H L	Brightness adjustment.	
CCT	Press the CCT button to change the color temperature to 3,000 K/3,500 K/4,000 K/5,000 K. After shutting down it will save the current color temperature.	
ON	Setting default brightness and CCT	To save the desired settings as a default, first tune the panel to desired color temp and brightness. Then hold the ON button on the wall remote until the panels turn off. This will save your setting for future use.

Matching methods for the handheld and wall-mount remotes:

NO	Grouping	Handheld remote	Wall-mount remote
1	1	1 + ID	On + CCT
2	2	2 + ID	On + CCT
3	3	3 + ID	On + CCT
4	4	4 + ID	On + CCT
5	All	All + ID	On + CCT

- ▶ After 10 Seconds of each operation, it will enter the standby power saving mode. If you need to adjust again, press the ON button and wait for the indicator light to flash.