

# LED DISK LIGHT

#31363 & #31368

► **DESIGN** - LED DISK LIGHT with a classic, low-profile design is an ideal solution for low ceilings. The acrylic lens with a 105° beam angle and CRI90+ grants you even light distribution. With 2.5kV surge protection, it is designed to operate on 120V circuits.

► **COLOR SELECTABLE** - You can choose either a 2,700K soft white, 3,000K warm white, 3,500K neutral white, 4,000K cool white, or 5,000K daylight color temperature.

► **DIMMING** - Smooth triac dimming capabilities ranging from 10% to 100% with modern LED dimmers allow you to control the look and feel of your space.

► **INSTALLATION** - The fixture can be installed on either an existing outlet box or a remodeled can by using a retrofit kit with universal TP24 or E26 connectors. 2.75", 3.5" and 4" mounting holes expand your installation options. It is also Wet Locations rated.

► **ADVANTAGES** - With a lifespan of 50,000 hours, these fixtures are made to last decades under normal operation! ASD provides a 5-year limited warranty along with UL and Energy Star certifications to guarantee top quality products and safety!

Catalog number	
Notes	
Type	



NEC 410.16 compliance



Finish:

Model	Size	Watts	Voltage	Dimmable	Lumens	CCT	Finish	Dimensions (LxH)
#31363	4 inch	10W	120 V	TRIAC	650/674/685/660/656 lm	5CCT (2,700/3,000/3,500/4,000/5,000 K)	White	5-7/8" x 7/8"
#31368	6 inch	15W	120 V	TRIAC	1100/1207/1245/1218/1153 lm	5CCT (2,700/3,000/3,500/4,000/5,000 K)	White	7-5/16" x 15/16"



# LED DISK LIGHT

#31363 & #31368

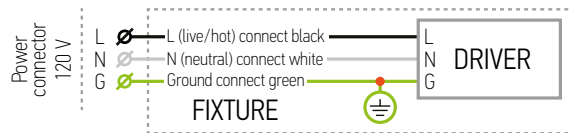
## INSTALLATION GUIDE

### IMPORTANT SAFETY INFORMATION:

Please read all the instructions below before installation.

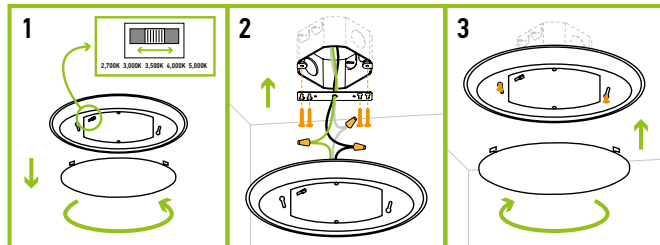
- ▶ Make sure that the supply voltage corresponds to the rated product voltage.
- ▶ The product must be installed by a qualified electrician in accordance with the National Electrical Code and corresponding local codes.
- ▶ If the product is damaged, do not use it.

### ELECTRICAL SCHEMATIC DIAGRAM:



### JUNCTION BOX INSTALLATION 4":

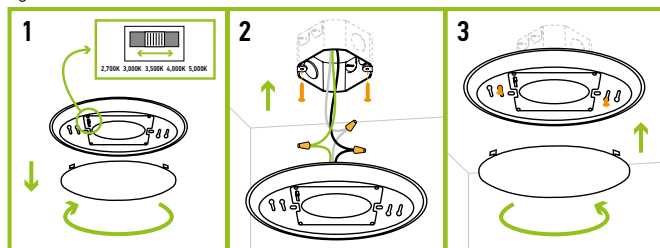
1. Remove the lens by turning it counter clockwise. Choose preferred color temperature by adjusting the switch position.
2. This fixture fits most outlet boxes with 2.75", 3.5" or 4" holes. Attach the crossbar to the outlet box using two screws. Insert another two screws into the crossbar. Connect the wires: Black to Black, White to White, Green to Green. Secure the connection with wire nuts. Tuck all the wires into the outlet box.
3. Attach the fixture to the crossbar by feeding screws through the keyhole slots and then tighten the screws in the narrow end of the keyhole slots. Do not over tighten. Place the Lens back and turn it clockwise to secure.



\* Please ensure that when installed in closets, ASD-LDS-AC has a minimum of 12 inches of clearance from the defined storage area.

### JUNCTION BOX INSTALLATION 6":

1. Remove the lens by turning it clockwise. Choose preferred color temperature by adjusting the switch position.
2. This fixture fits most outlet boxes with 2.75", 3.5" or 4" holes. Insert two screws into the outlet box. Connect the wires: Black to Black, White to White, Green to Green. Secure the connection with wire nuts. Tuck all the wires into the outlet box.
3. Attach the fixture to the outlet box by feeding screws through the keyhole slots and then tighten the screws in the narrow end of the keyhole slots. Do not over tighten. Place the Lens back and turn it counter clockwise to secure.



\* Please ensure that when installed in closets, ASD-LDS-AC has a minimum of 12 inches of clearance from the defined storage area.

### ⚠ WARNING

**RISK OF PERSONAL INJURY – READ and follow all WARNINGS and installation instructions.** Keep or give to the owner for future reference.

**Risk of cuts:** Wear gloves to prevent cuts or abrasions when removing from carton, handling, installing, and maintaining this product.

**Risk of electric shock:** This product must be installed in accordance with the applicable installation code by a person familiar with the construction and operation of the product and the hazards involved.

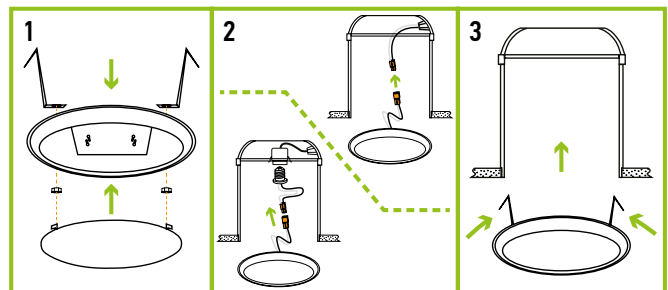
**Risk of Fire:** Minimum 194°F supply conductors. Consult a qualified electrician to ensure correct branch circuit conductor.

ASD® assumes no responsibility for claims arising out of improper or careless installation or handling of this product.

### RECESSED CAN INSTALLATION 4" ASD-RK4-LDS

sold separately:

1. Remove the existing fixture. Remove the lens by turning it counter clockwise. Attach remodeled clips. Secure with screws and nut. Place the lens back and turn it clockwise.
2. Link TP24 connector with the fixture wires. Connect the E26 Adapter and thread it into the socket of the recessed can or connect it with TP24 of the recessed can directly.
3. Carefully route wires, and push fixture up to ceiling surface.

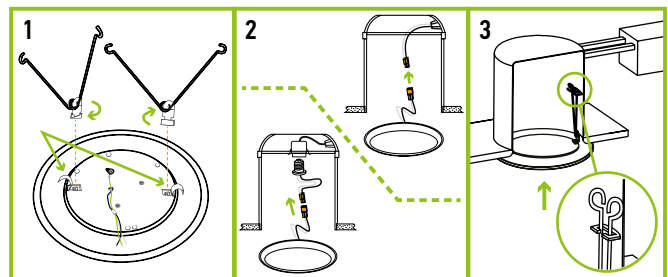


\* Please ensure that when installed in closets, ASD-LDS-AC has a minimum of 6 inches of clearance from the defined storage area.

### RECESSED CAN INSTALLATION 6" ASD-RK6-LDS

sold separately:

1. Place the spring clip arms into the rectangular slots and twist them in a locked position. The spring clips must be adjusted depending on the Can size.
2. Link TP24 connector with the fixture wires. Connect the E26 Adapter and thread it into the socket of the recessed can or connect it with TP24 of the recessed can directly.
3. Squeeze the two sets of spring clip arms up towards each other. Carefully route wires into the can, and hook both sets of spring clip arms into the arm hooks on the inside wall of the can. Release spring clip arms and gently push the Disk Light up into the can until flush against the ceiling surface.



\* Please ensure that when installed in closets, ASD-LDS-AC has a minimum of 6 inches of clearance from the defined storage area.

